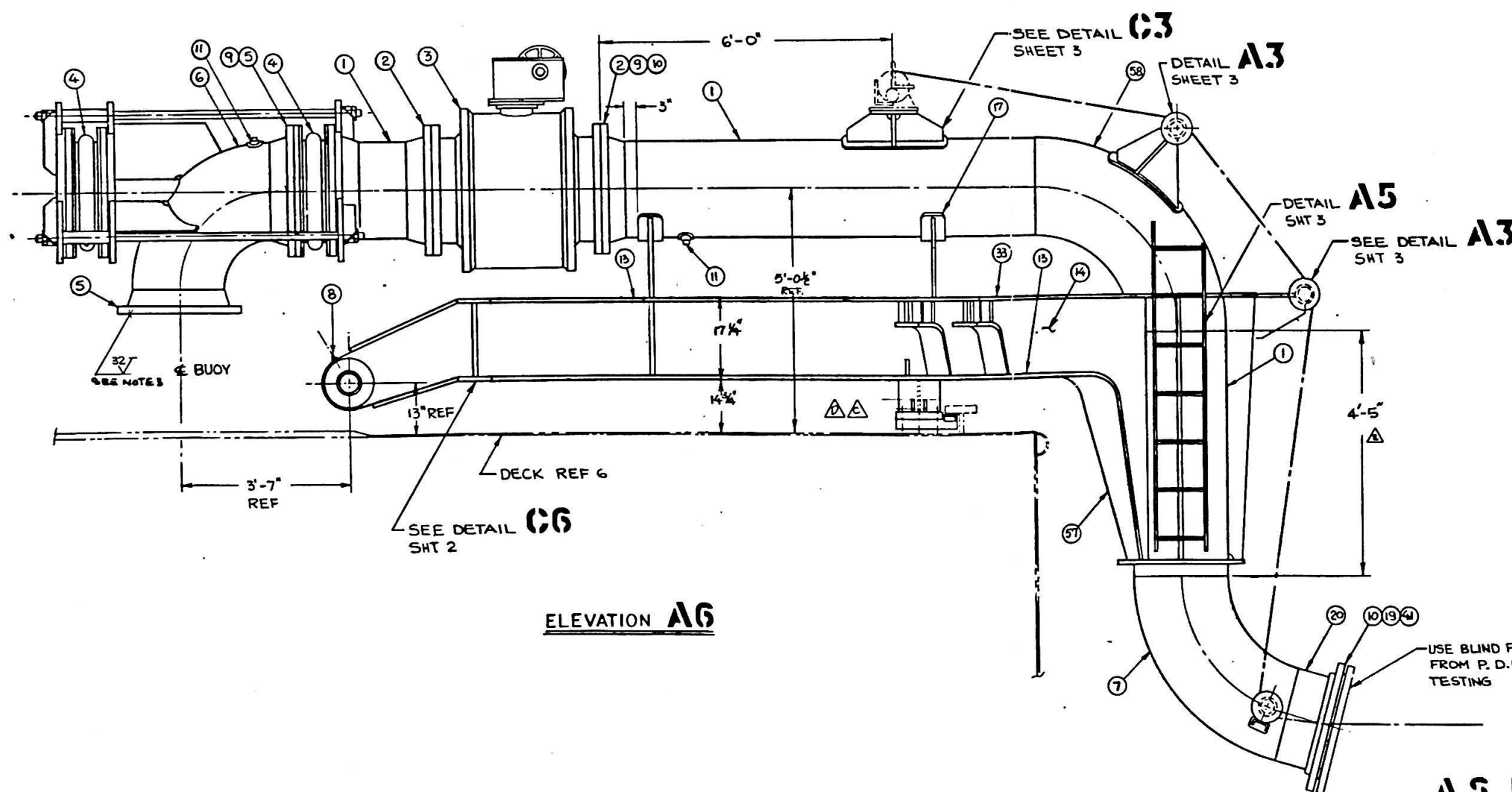


-SEE DETAIL  
SHT 4

DETAIL 108  
SHT 3

DETAIL A5  
SHT 3

PLAN VIEW CG



DETAIL A3  
SHEET 3

DETAIL A5

—SEE DETAIL A3  
SHT 3

SEE DETAIL CG  
SHT 2

✓ DECK REF 6

ELEVATION **AG**

## AS BUILT

### GENERAL NOTES

1. PIPING TO BE TEMPLATED AFTER INSTALLATION OF P.D.U. (REF 4) TO INSURE PROPER ALIGNMENT.
2. FLANGE BOLT PATTERN TO STRADDLE CENTERLINE UNLESS OTHERWISE NOTED.
3. ONE FLANGE FACE TO BE MACHINED TO 32 FINISH FOR CONNECTION TO P.D.U. REF 4.

2. FLANGE BOLT PATTERN TO STRADDLE  
CENTERLINE UNLESS OTHERWISE NOTED

3. ONE FLANGE FACE TO BE MACHINED TO B2 FINISH FOR CONNECTION TO P.D.U. REF 4.


REFERENCES					
NO.	TITLE	DATE	CHKD	REV'D	BY
1	PIPE ARM DETAILS	11-1-01			
2	PIPE ARM DETAILS	11-1-01			
3	PIPE ARM DETAILS	11-1-01			
4	PDU COMPOSITE	11-1-01			
5	BOGIE WHEEL ASSY	11-1-01			
6	11METER BUOY DECK PLAN	11-1-01			

REVISIONS					
NO.	DESCRIPTION	DATE	CHKD	REV'D	BY
A	ISSUED FOR BID				
B	GENERAL REVISIONS PER DWG. CHECK. ISSUED FOR APPROVAL				
C	ADDED BKTS TO ELEV. AC, CANCELED QTY TO ITEM 14 WAS 88.5, CANCELED DWA TO ITEM 23 WAS 50 £200 ISSUED FOR CONSTRUCTION				
D	REVISED ITEM 23, AND SHEETS 2, 3, & 4.				
E	CHANGED ITEMS W/7, 14, 22, 23, 24, 25, 26, 27, 28, 29, 30, 31, 32, 33, 34, 35, 36, 37, 38, 39, 40, 41, 42, 43, 44, 45, 46, 47, 48, 49, 50, 51, 52, 53, 54, 55, 56, 57, 58, 59, 60, 61, 62, 63, 64, 65, 66, 67, 68, 69, 70, 71, 72, 73, 74, 75, 76, 77, 78, 79, 80, 81, 82, 83, 84, 85, 86, 87, 88, 89, 90, 91, 92, 93, 94, 95, 96, 97, 98, 99, 100, 101, 102, 103, 104, 105, 106, 107, 108, 109, 110, 111, 112, 113, 114, 115, 116, 117, 118, 119, 120, 121, 122, 123, 124, 125, 126, 127, 128, 129, 130, 131, 132, 133, 134, 135, 136, 137, 138, 139, 140, 141, 142, 143, 144, 145, 146, 147, 148, 149, 150, 151, 152, 153, 154, 155, 156, 157, 158, 159, 160, 161, 162, 163, 164, 165, 166, 167, 168, 169, 170, 171, 172, 173, 174, 175, 176, 177, 178, 179, 180, 181, 182, 183, 184, 185, 186, 187, 188, 189, 190, 191, 192, 193, 194, 195, 196, 197, 198, 199, 200, 201, 202, 203, 204, 205, 206, 207, 208, 209, 210, 211, 212, 213, 214, 215, 216, 217, 218, 219, 220, 221, 222, 223, 224, 225, 226, 227, 228, 229, 230, 231, 232, 233, 234, 235, 236, 237, 238, 239, 240, 241, 242, 243, 244, 245, 246, 247, 248, 249, 250, 251, 252, 253, 254, 255, 256, 257, 258, 259, 260, 261, 262, 263, 264, 265, 266, 267, 268, 269, 270, 271, 272, 273, 274, 275, 276, 277, 278, 279, 280, 281, 282, 283, 284, 285, 286, 287, 288, 289, 290, 291, 292, 293, 294, 295, 296, 297, 298, 299, 300, 301, 302, 303, 304, 305, 306, 307, 308, 309, 310, 311, 312, 313, 314, 315, 316, 317, 318, 319, 320, 321, 322, 323, 324, 325, 326, 327, 328, 329, 330, 331, 332, 333, 334, 335, 336, 337, 338, 339, 340, 341, 342, 343, 344, 345, 346, 347, 348, 349, 350, 351, 352, 353, 354, 355, 356, 357, 358, 359, 360, 361, 362, 363, 364, 365, 366, 367, 368, 369, 370, 371, 372, 373, 374, 375, 376, 377, 378, 379, 380, 381, 382, 383, 384, 385, 386, 387, 388, 389, 390, 391, 392, 393, 394, 395, 396, 397, 398, 399, 400, 401, 402, 403, 404, 405, 406, 407, 408, 409, 410, 411, 412, 413, 414, 415, 416, 417, 418, 419, 420, 421, 422, 423, 424, 425, 426, 427, 428, 429, 430, 431, 432, 433, 434, 435, 436, 437, 438, 439, 440, 441, 442, 443, 444, 445, 446, 447, 448, 449, 450, 451, 452, 453, 454, 455, 456, 457, 458, 459, 460, 461, 462, 463, 464, 465, 466, 467, 468, 469, 470, 471, 472, 473, 474, 475, 476, 477, 478, 479, 480, 481, 482, 483, 484, 485, 486, 487, 488, 489, 490, 491, 492, 493, 494, 495, 496, 497, 498, 499, 500, 501, 502, 503, 504, 505, 506, 507, 508, 509, 510, 511, 512, 513, 514, 515, 516, 517, 518, 519, 520, 521, 522, 523, 524, 525, 526, 527, 528, 529, 530, 531, 532, 533, 534, 535, 536, 537, 538, 539, 540, 541, 542, 543, 544, 545, 546, 547, 548, 549, 550, 551, 552, 553, 554, 555, 556, 557, 558, 559, 560, 561, 562, 563, 564, 565, 566, 567, 568, 569, 570, 571, 572, 573, 574, 575, 576, 577, 578, 579, 580, 581, 582, 583, 584, 585, 586, 587, 588, 589, 590, 591, 592, 593, 594, 595, 596, 597, 598, 599, 600, 601, 602, 603, 604, 605, 606, 607, 608, 609, 610, 611, 612, 613, 614, 615, 616, 617, 618, 619, 620, 621, 622, 623, 624, 625, 626, 627, 628, 629, 630, 631, 632, 633, 634, 635, 636, 637, 638, 639, 640, 641, 642, 643, 644, 645, 646, 647, 648, 649, 650, 651, 652, 653, 654, 655, 656, 657, 658, 659, 660, 661, 662, 663, 664, 665, 666, 667, 668, 669, 670, 671, 672, 673, 674, 675, 676, 677, 678, 679, 680, 681, 682, 683, 684, 685, 686, 687, 688, 689, 690, 691, 692, 693, 694, 695, 696, 697, 698, 699, 700, 701, 702, 703, 704, 705, 706, 707, 708, 709, 710, 711, 712, 713, 714, 715, 716, 717, 718, 719, 720, 721, 722, 723, 724, 725, 726, 727, 728, 729, 730, 731, 732, 733, 734, 735, 736, 737, 738, 739, 740, 741, 742, 743, 744, 745, 746, 747, 748, 749, 750, 751, 752, 753, 754, 755, 756, 757, 758, 759, 760, 761, 762, 763, 764, 765, 766, 767, 768, 769, 770, 771, 772, 773, 774, 775, 776, 777, 778, 779, 780, 781, 782, 783, 784, 785, 786, 787, 788, 789, 790, 791, 792, 793, 794, 795, 796, 797, 798, 799, 800, 801, 802, 803, 804, 805, 806, 807, 808, 809, 810, 811, 812, 813, 814, 815, 816, 817, 818, 819, 820, 821, 822, 823, 824, 825, 826, 827, 828, 829, 830, 831, 832, 833, 834, 835, 836, 837, 838, 839, 840, 841, 842, 843, 844, 845, 846, 847, 848, 849, 850, 851, 852, 853, 854, 855, 856, 857, 858, 859, 860, 861, 862, 863, 864, 865, 866, 867, 868, 869, 870, 871, 872, 873, 874, 875, 876, 877, 878, 879, 880, 881, 882, 883, 884, 885, 886, 887, 888, 889, 890, 891, 892, 893, 894, 895, 896, 897, 898, 899, 900, 901, 902, 903, 904, 905, 906, 907, 908, 909, 910, 911, 912, 913, 914, 915, 916, 917, 918, 919, 920, 921, 922, 923, 924, 925, 926, 927, 928, 929, 930, 931, 932, 933, 934, 935, 936, 937, 938, 939, 940, 941, 942, 943, 944, 945, 946, 947, 948, 949, 950, 951, 952, 953, 954, 955, 956, 957, 958, 959, 960, 961, 962, 963, 964, 965, 966, 967, 968, 969, 970, 971, 972, 973, 974, 975, 976, 977, 978, 979, 980, 981, 982, 983, 984, 985, 986, 987, 988, 989, 990, 991, 992, 993, 994, 995, 996, 997, 998, 999, 1000				

CONTINUED ON SMT 2			
30 MM THK x 305 MM $\phi$ CHEEC PL	↑	4	
30 MM THK PIPE WELDED RING		1	
		60	

ITEM	DESCRIPTION	SPEC	QTY
33	21 MM THK TOP PLATE	ABS 6ED	56 FT
32	12 MM THK ROPE WIRE GUIDE BEKT		5.1 56 FT
31	25 MM THK WINCH PLATFORM BEKT		8.8 80 FT
30	155 MM THK WINCH MTG PL	ABS 6EA	1
29	54 MM THK WEB BOGIE WHEEL	ABS 6ED	10.8 80 FT
28	12 MM Ø ROUND BAR		4 LF
27	20 MM THK x 150 MM DIA		2
26	20 MM THK x 8 MM WIDE x 27 LG FLT BAR	ABS 6EA	2
25	4" Ø PIPE X S	A-53 GR-B	66 LF
24	20 MM THK x 203 MM DIA PL	ABS 6EA	6
23	44 MM THK PLATE		2
22	25 x 11 MM THK BOGIE WHEEL PL	ABS 6ED	8.9 56 FT
21	65 MM SQUARE BAR x 140 MM LG	ABS 6EA	8
20	24" Ø X S LAP JOINT STUB END	A-234 GR-B	1
19	24" Ø LAP JOINT FLG CLASS 150	A-105	1
18	25 MM THK x 65 MM WIDE FLAT BAR		4 LF
17	25 x 11 MM THK x 150 MM WIDE FLG FLAT BAR		5.3 LF
16	25 x 11 MM THK x 200 MM WIDE FLG FLAT BAR	ABS 6ED	22.3 LF
15	60 x 457 x 20 MM THK DRLR PL		1
14	20 MM THK x 400 MM WIDE WEB PL		84.8 56 FT
13	20 MM THK x 250 MM WIDE FLG PL	ABS 6EA	34.7 LF
12	6" Ø PIPE .432 WALL THK	A-106 GR-B	135 LF
11	24-14-1/2" THREADED X S WITH SOLID 50 PIPE PLUG	A-105	2
10	1/8 TH HEAVYWEAR ABRASIOS BASKET HALF RICE FOR 12" LG CLASS 150 LD R.F		3
9	1 1/2" 8 UN STD BOLT x 7" LG WITH ENDS NUTS PT F COATED	A-194 A-194ZD	120
8	1/8" NPT ALEMITE FITTING 1963	MONEL	5
7	24" Ø ELBOW 75° SCH 40 L RADIUS	A-234 GR-B	1
6	24" Ø ELBOW 90° X S SHORT RADIUS	A-234 GR-B	1
5	24" Ø WNRF FLG CLASS 150 WITH 234 BORE (SEE NOTE 3)	A-105	3
4	24" RUBBER EXPANSION JOINT 10" FACE TO FACE W/24" TH RETAINING RING		2
3	24" GROOVE B-S BALL VALVE R.F. 150 LB. FLG W/GEAR OPERATOR		1
2	24" Ø WNRF FLG 150° W/234 BORE	A-105	2
1	24" Ø PIPE .500" WALL THK	A-106 GR-B	LF

Information herein presented is confidential, proprietary information of IMODCO Marine Engineering Inc. a subsidiary of ANSCA International Corporation. Any person possessing this information is required to destroy same in confidence, to agree to make no disclosure, oral, reproduction or copy thereof, except as authorized by ANSCA, and to return same on request. Copyright, IMODCO Marine Engineering Inc., 1988, ©		BILL OF MATERIAL  10800 WILSHIRE BLVD., SUITE 1100, LOS ANGELES, CA. 90024	
CLIENT	PROJECT	TITLE	
CPC	SRI LANKA	PIPE ARM	
DIMENSION TOLERANCES		ASSEMBLY	
SEE SPECIFICATIONS			
DO NOT SCALE DRAWING			
DRAWN NICOLESCU APRIL 86	CHECKED <i>[Signature]</i>	REVISED 6/22/86	APPROVED MCO 6/22/86
SCALE 3/4" = 1'-0"		DWG. NO. 1191-021 SHT 1 OF 4	

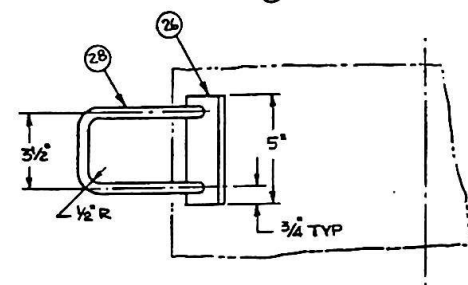
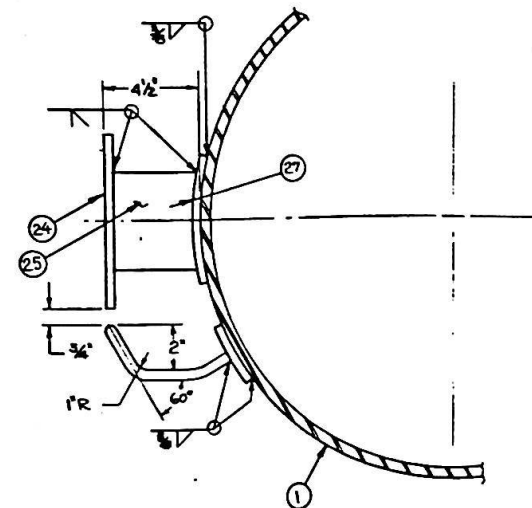




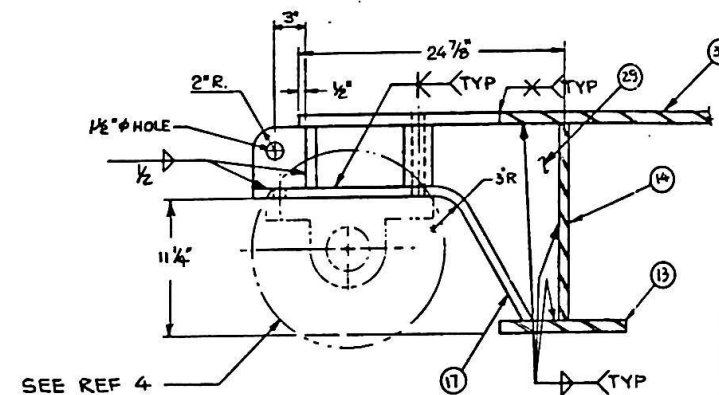
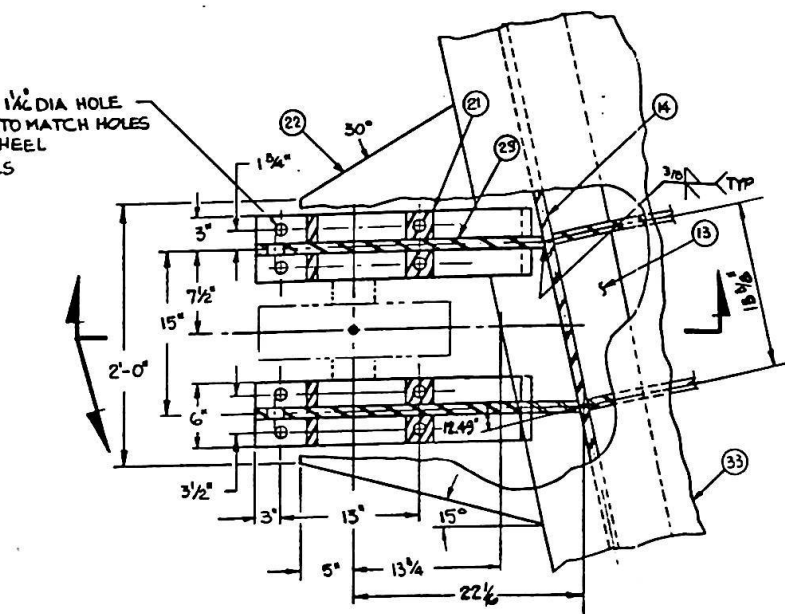
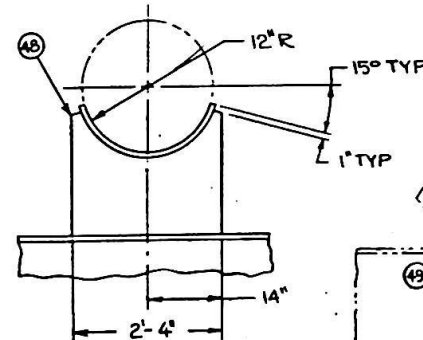
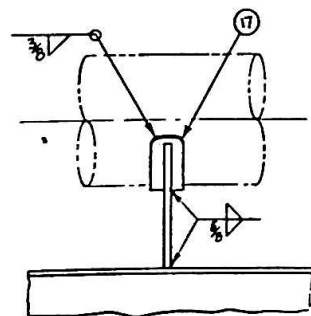
REFERENCES					
NO.	TITLE	DRAWING NO.			
1	PIPE ARM ASSY	1191-001			
2	PIPE ARM DETAILS	1191-001			
3	PIPE ARM DETAILS	1191-001			
4	BOGIE WHEEL ASSEMBLY	1191-005			
5					
6					

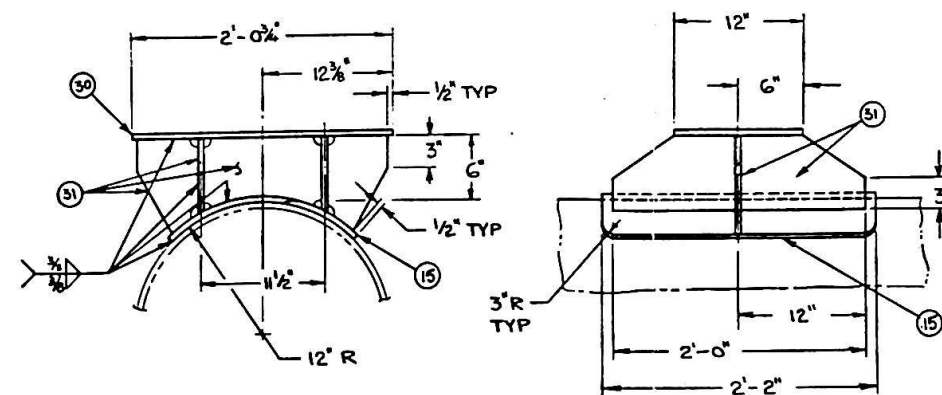
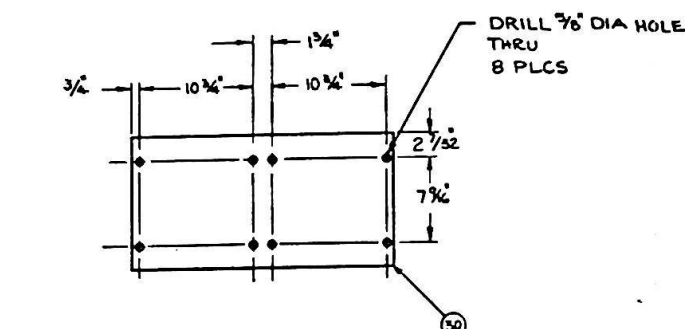
REVISIONS					
NO.	DESCRIPTION	DRAWN	CHECKED	REV'D	APP'D
A	ISSUED FOR BID				
B	GENERAL REVISIONS PER DWG CHECK. ISSUED FOR APPROVAL	EL	MP	26	11/6
C	REVISED DETAIL A7 ISSUED FOR CONSTRUCTION	G.W.	MH	63	11/14
D	REVISED DETAILS 'A-7, & 'C-5'	EL	MP	63	11/14
E	AS BUILT				11/14



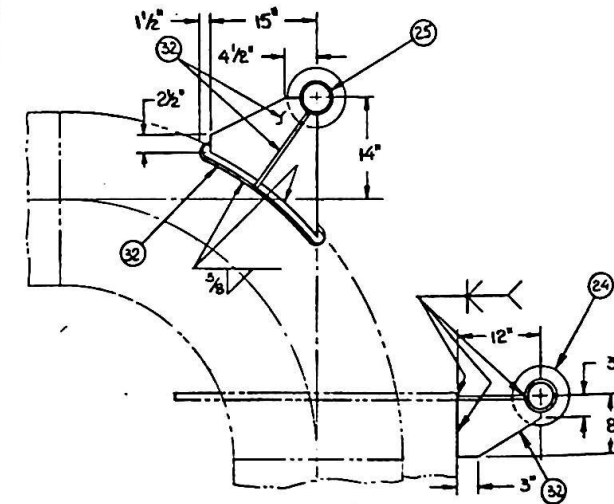
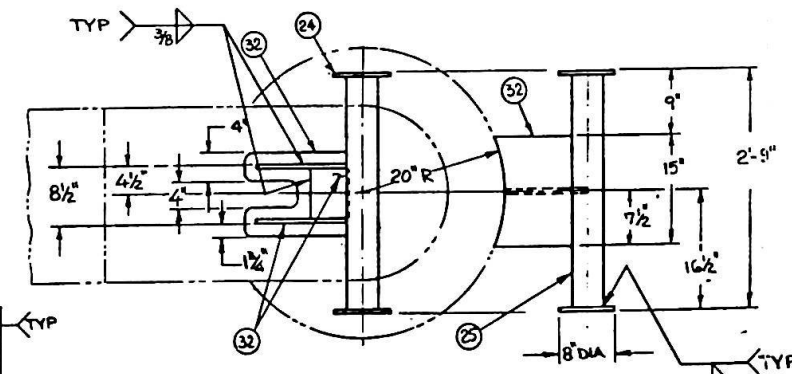
DETAIL 133  
SCALE 3"=1'-0"



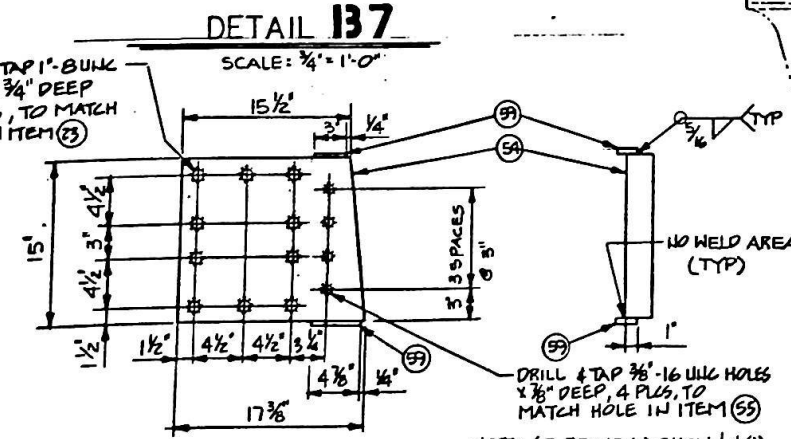
DETAIL C5 



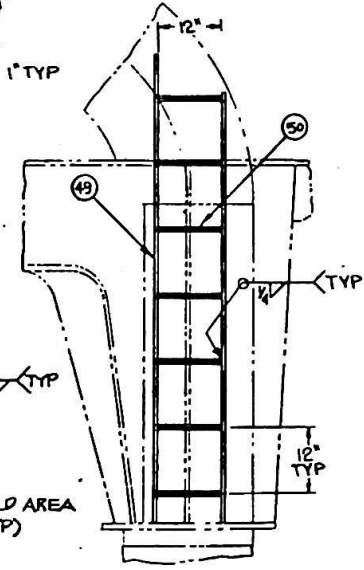
DETAIL C3



DETAIL **A3**  
SCALE 1" = 1'-0"


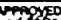



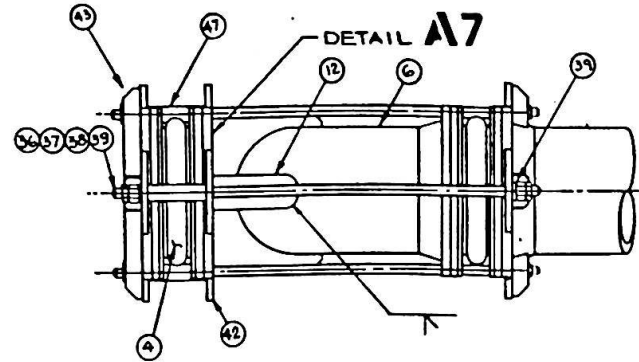
DETAIL **A7**  
SCALE:  $1\frac{1}{2}" = 1'-0"$



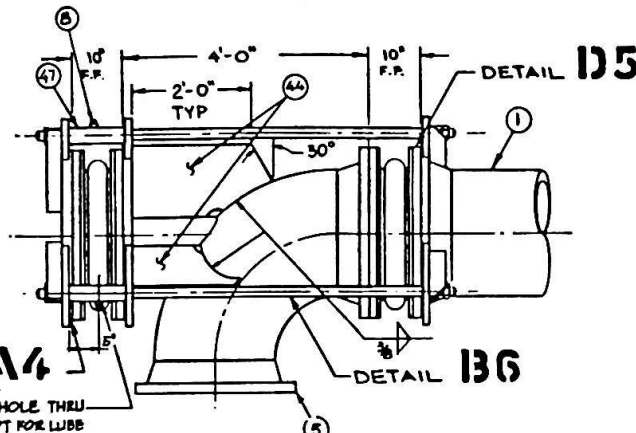
**DETAIL A5**  
SCALE  $\frac{3}{4}" = 1' - 0"$

## AS BUILT

ITEM	DESCRIPTION	SPEC	QTY	SHT
BILL OF MATERIAL				
<p>Information herein presented is confidential, proprietary information of IMODCO Marine Engineering Inc., a subsidiary of AMCA International Corporation. Any person attempting this information is required to destroy same in confidence, to agree to return for destruction, sale, reproduction or every document, except as authorized by AMCA, and to return same on request.</p> <p>Copyright, IMODCO Marine Engineering Inc., 1988, ©</p>		 <p><b>IMODCO</b> <b>AMCA</b> <b>INTERNATIONAL</b></p>		<p>10800 WILSHIRE BLVD., SUITE 1100, LOS ANGELES, CA, U.S.A. 90024</p>
CLIENT		PROJECT		TITLE
CPC		SRI LANKA		<p><u>PIPE ARM</u></p> <p><u>DETAILS</u></p>
DIMENSION TOLERANCES				
SEE SPECIFICATIONS				
DO NOT SCALE DRAWING				
DRAWN NIKOLE SCU APRIL 86	CHECKED 4/14/86	REVIEWED 6/28/86	APPROVED 	SCALE 1/2" = 1'-0" E NOTED
DWG. NO. 1191-021 SHT 3 OF 4				 REV



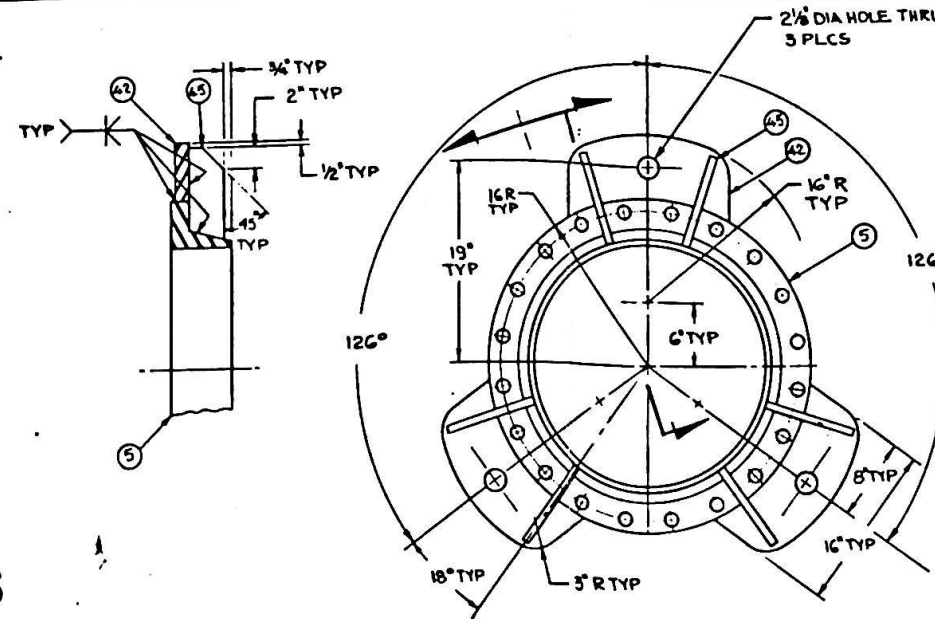
TOP VIEW



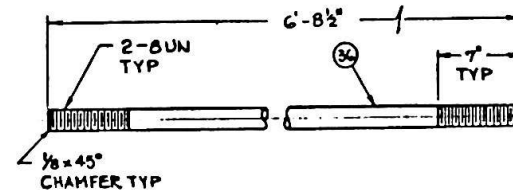
ELEVATION

DETAIL C8

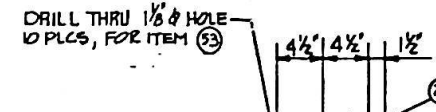
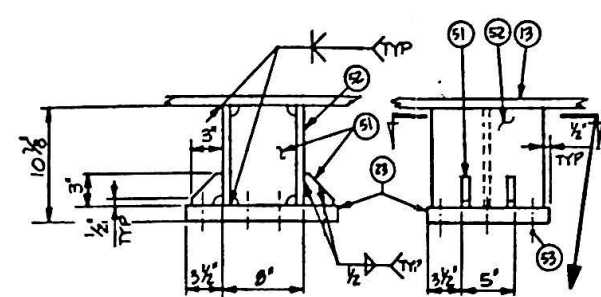
EXPANSION JOINT ASSEMBLY  
SCALE 3/4" = 1'-0"



DETAIL D5

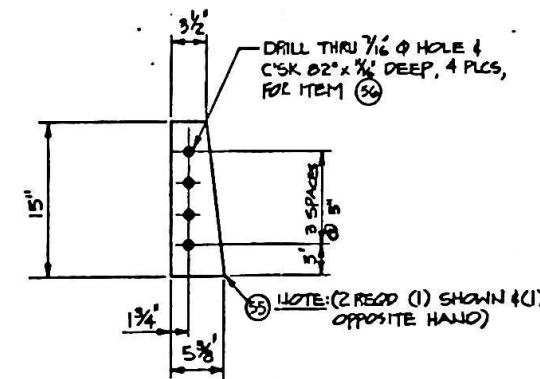


DETAIL B6



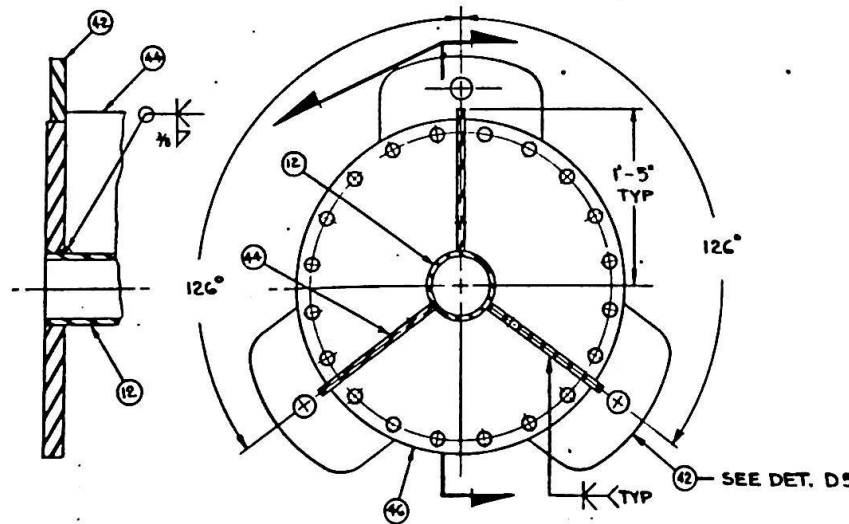
DETAIL D3

SCALE: 1 1/2" = 1'-0"

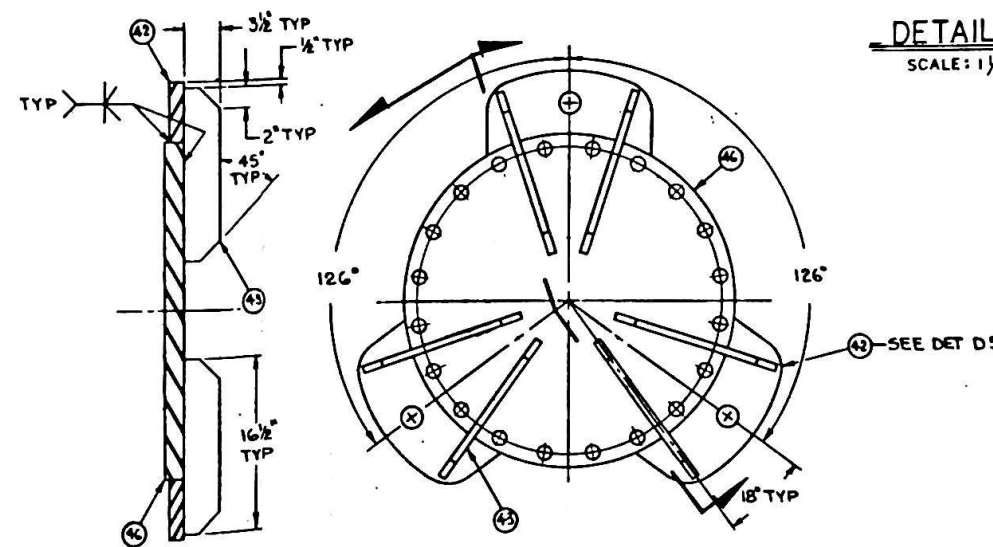


DETAIL B3

SCALE: 1 1/2" = 1'-0"



DETAIL A7



DETAIL A4

AS BUILT

REFERENCES		
NO.	TITLE	DRAWING NO.
1	PIPE ARM ASSY	1191-021
2	PIPE ARM DETAILS	1191-021
3	PIPE ARM DETAILS	1191-021
4		
5		
6		
REVISIONS		
NO.	DESCRIPTION	DATE
A	ISSUED FOR BID	11/1/81
B	GENERAL REVISIONS PER DWS CHECK. ISSUED FOR APPROVAL	11/1/81
C	REVISED DETAIL D3 ISSUED FOR CONSTRUCTION	11/1/81
D	REVISED DETAIL "D-3", AND ADDED DETAIL "B-3"	11/1/81
E	AS BUILT	11/1/81

ITEM	DESCRIPTION	SPEC	QTY	UNIT
BILL OF MATERIAL				
<div> <div> <b>IMODCO</b>            AMCA INTERNATIONAL            10000 WILSHIRE BLVD.,            SUITE 1100,            LOS ANGELES, CA, U.S.A.            90048         </div> <div> <b>CLIENT</b>            CPC         </div> <div> <b>PROJECT</b>            SRI LANKA         </div> <div> <b>TITLE</b>            PIPE ARM            DETAILS         </div> </div>				
<div> <div> <b>DO NOT SCALE DRAWING</b>            DRAWN            NICKLESCH            APRIL 80         </div> <div> <b>CHECKED</b>            2/4/80         </div> <div> <b>REVIEWED</b>            6/2/80         </div> <div> <b>APPROVED</b>            6/2/80         </div> </div>				
<div> <div> <b>SCALE</b>            1 1/2" = 1'-0"            &amp; NOTED         </div> <div> <b>DWG. NO.</b>            1191-021            SHT 4 OF 4         </div> </div>				